

ZXM6-H144 Series

Znshinesolar 5BB **HALF-CELL** Monocrystalline PV Module



144

Mono Poly Solutions

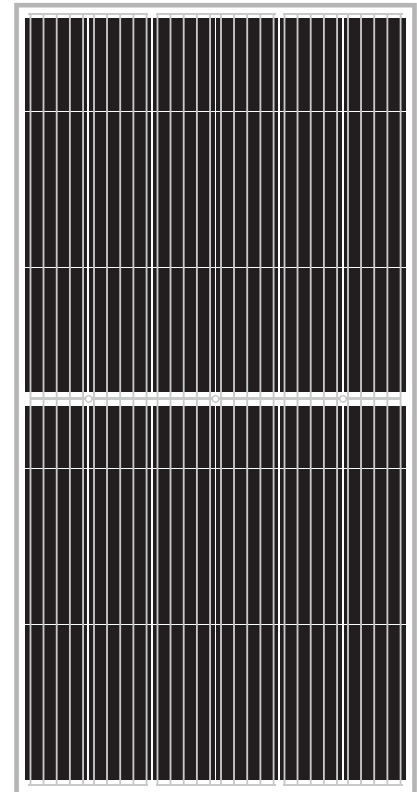
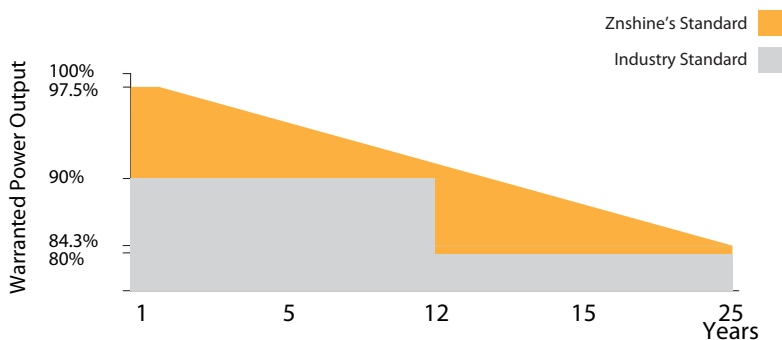
385W | 390W | 395W | 400W | 405W | 410W

Made with selected materials and components to grant quality, duration, efficiency and through outputs, the ZXM6-H144 monocrystalline modules by ZNSHINE SOLAR(power output 385 up to 410 Wp, represent a highly flexible solution for diverse installation types, from industrial rooftop plants to small home PV systems or large ground surfaces. This allows you to produce clean energy while reducing your energy bill.

ZNSHINE SOLAR' S ZXM6-H144 monocrystalline solar modules are tested and approved by international acknowledged laboratories, so that we can offer our customers a reliable and price-quality optimized product. The linear warranty on product outputs further ensures increased security and return on investments over time.

12 years product warranty/25 years output warranty

0.55% Annual Degradation over 25 years



Half Cell Technology

Module RS decreases, FF (fill factor) increases, power gain is stable above 2%, and can be increased by 5~10W



High Efficiency

Graphene coating can increase about 2W of the module efficiency by rising around 0.5% of the light transmission



Anti PID

Limited power degradation of ZXM6-H144 module caused by PID effect is guaranteed under strict testing condition for mass production



Better Weak Illumination Response

Lower temperature coefficient and wide spectral response, higher power output, even under low-light settings



Certified to withstand the most challenging environmental conditions

5400 Pa snow load
2400 Pa wind load



Graphene Coating

Graphene coating modules can increase power generation and self-cleaning, also can save maintenance cost



ZnShine PV-Tech Co., LTD, founded in 1988, is a world-leading high-performance PV module manufacturer, PV power station developer, EPC and power station operator. With its state-of-the-art production lines, the company boasts module output of 5GW. Bloomberg has listed ZNShine as a global Tier 1 PV manufacturer and Top 4 reliable PV supplier.

ZXM6-H144 Series | Znshinesolar 5BB HALF-CELL Monocrystalline PV Module ZNSHINESOLAR

ELECTRICAL PROPERTIES | STC*

Module Type	ZXM6-H144-385/M	ZXM6-H144-390/M	ZXM6-H144-395/M	ZXM6-H144-400/M	ZXM6-H144-405/M	ZXM6-H144-410/M
Nominal Power Watt Pmax(W)	385	390	395	400	405	410
Power Output Tolerance Pmax(%)	0~+3	0~+3	0~+3	0~+3	0~+3	0~+3
Maximum Power Voltage Vmp(V)	40.4	40.6	40.8	41.0	41.2	41.4
Maximum Power Current Imp(A)	9.53	9.61	9.69	9.76	9.84	9.91
Open Circuit Voltage Voc(V)	48.5	48.7	48.9	49.1	49.3	49.5
Short Circuit Current Isc(A)	10.00	10.08	10.16	10.24	10.32	10.40
Module Efficiency (%)	18.98	19.23	19.48	19.72	19.97	20.22

*STC (Standard Test Condition): Irradiance 1000W/m², Module Temperature 25°C, AM 1.5
 *The data above is for reference only and the actual data is in accordance with the practical testing

ELECTRICAL PROPERTIES | NMOT*

Maximum Power Pmax(Wp)	285.1	288.8	292.6	296.1	300.0	303.5
Maximum Power Voltage Vmpp(V)	37.4	37.6	37.8	38.0	38.2	38.4
Maximum Power Current Imp(A)	7.61	7.67	7.74	7.80	7.86	7.91
Open Circuit Voltage Voc(V)	45.0	45.2	45.3	45.5	45.7	45.9
Short Circuit Current Isc(A)	8.08	8.14	8.21	8.27	8.34	8.40

*NMOT(Nominal module operating temperature):Irradiance 800W/m²,Ambient Temperature 20°C,AM 1.5,Wind Speed 1m/s
 *The data above is for reference only and the actual data is in accordance with the practical testing

TEMPERATURE RATINGS

NMOT	45°C ±2°C
Temperature coefficient of Pmax	-0.36%/°C
Temperature coefficient of Voc	-0.29%/°C
Temperature coefficient of Isc	0.05%/°C

*Do not connect Fuse in Combiner Box with two or more strings in parallel connection

MECHANICAL DATA

Solar cells	Mono 158.75×79.375 mm
Cells orientation	144 (6×24)
Module dimension	2024×1002×35 mm
Weight	22.5 kg
Glass	High transparency,low iron,tempered
	Glass 3.2 mm (AR-coating)
Junction box	IP 68, 3 diodes
Cables	4 mm ² , 350 mm
Connectors	MC4-compatible

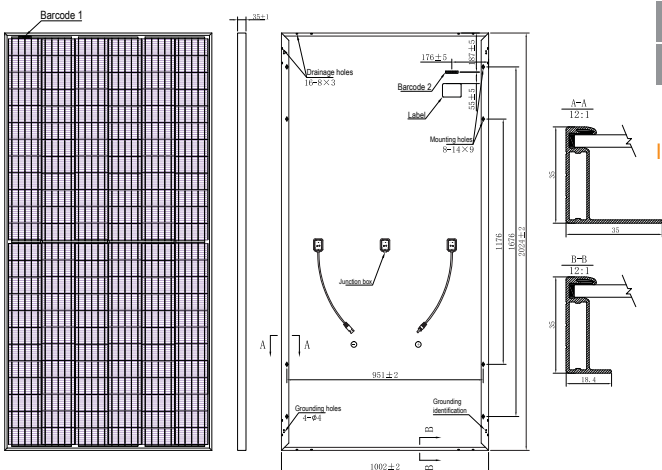
WORKING CONDITIONS

Maximum system voltage	1000 / 1500 V DC
Operating temperature	-40°C~+85°C
Maximum series fuse	20 A
Maximum load(snow/wind)	5400 Pa / 2400 Pa

PACKAGING INFORMATION

Packing Type	40' HQ
Piece/Box	30
Piece/Container	660

DIMENSION OF THE PV MODULE (mm)



I-V CURVES OF THE PV MODULE

